



## **COLUMN DRENCH SHOWER**

PRODUCT CODE  
**S1300**

Date: March 2009

### **Pedestal Mounted Emergency Shower, Plastic Shower Head**

Model S1300 is a pedestal mounted emergency shower with a plastic showerhead and a 1" stay-open ball valve with a pull rod.

Standard Equipment:

**Showerhead:** Yellow, ABS plastic 190 mm diameter shower head with a 75 litres/minute flow regulator.

**Valve:** 1" rough chrome plated brass stay-open ball valve. Unit is provided with a stainless steel actuator arm and a 737 mm stainless steel pull rod.

**Water Supply:** 1-1/4" BSP female threaded side or top inlet.

**Piping & Mounting:** Schedule 40 galvanized steel piping and a 232 mm diameter cast iron floor flange with a yellow powder coated finish.

**Universal Sign:** ANSI compliant, vertical identification sign.

**Weekly Test Tag:** A water proof test card to record the date and inspector's name for weekly functional testing of the unit.

#### **Accessories:**

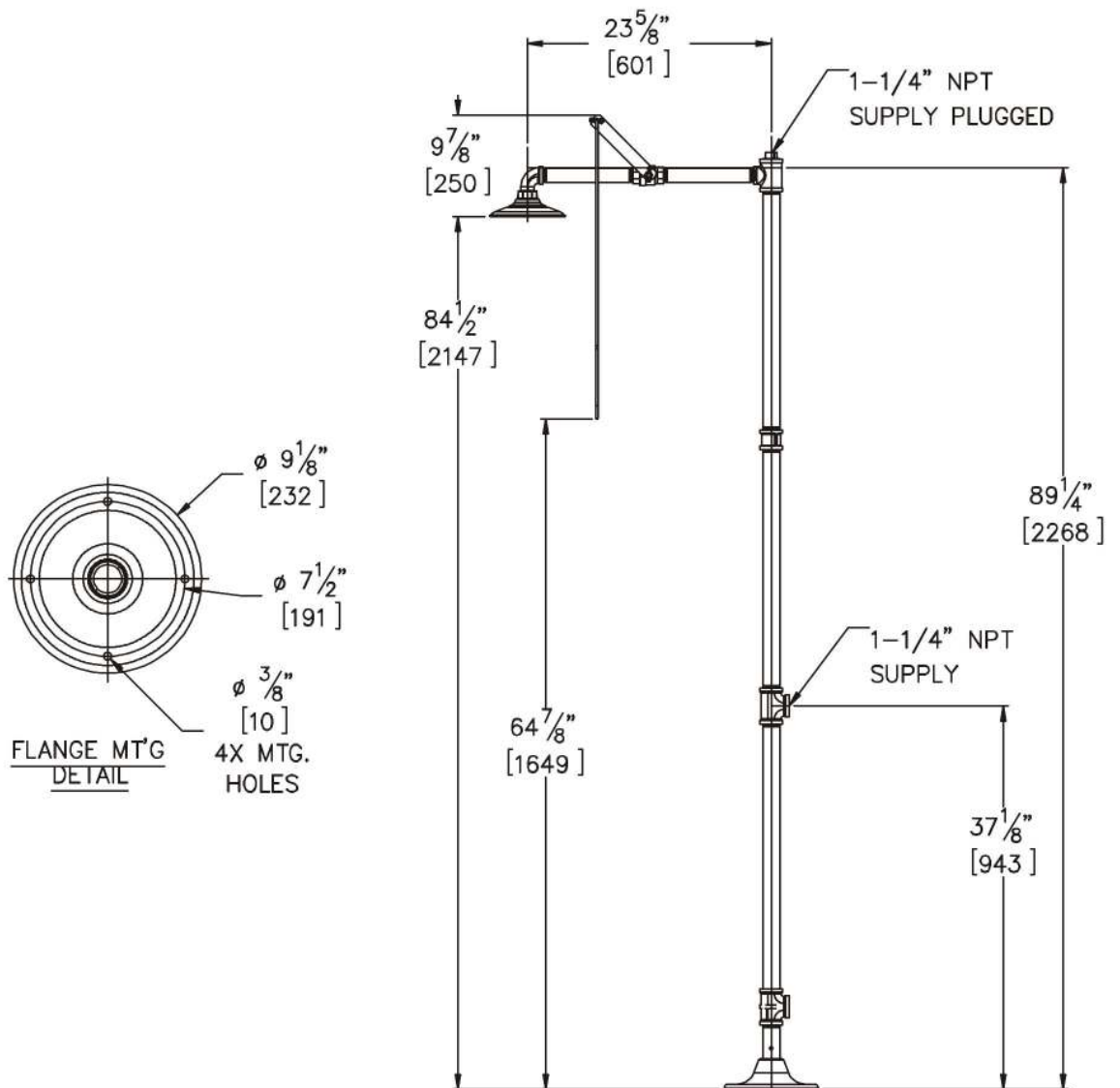
- ◆ ADH: Auxiliary hand-held drench hose

#### **Compliances:**

Test rating conditions are compliant to ANSI Z358.1-2004



□ **Model S1300** : Pedestal Mounted Emergency Shower, Plastic Showerhead



GENERAL NOTES:

1. ALL DIMENSIONS ARE IN INCHES [MM].

Rough-in # **S1300** Rev. A 11/20/08