



## **COLUMN DRENCH SHOWER**

PRODUCT CODE  
**S2300-AS**

Date: March 2009

### **Pedestal Mounted Emergency Shower, All Stainless Steel**

Model S2300-AS is a pedestal mounted emergency shower with a stainless steel shower head and a stainless steel 1" stay-open ball valve with a pull rod.

Standard Equipment:

**Shower head:** Stainless steel, 188 mm diameter showerhead with a 75 litres/minute flow regulator.

**Valve:** 1" rough stainless steel stay-open ball valve. Unit is provided with a stainless steel actuator arm and a 737 mm stainless steel pull rod.

**Water Supply:** 1-1/4" BSP female threaded stainless steel side or top inlet.

**Piping & Mounting:** Schedule 40 stainless steel piping and a 232 mm diameter stainless steel floor flange.  
**Universal Sign:** ANSI compliant, vertical identification sign.

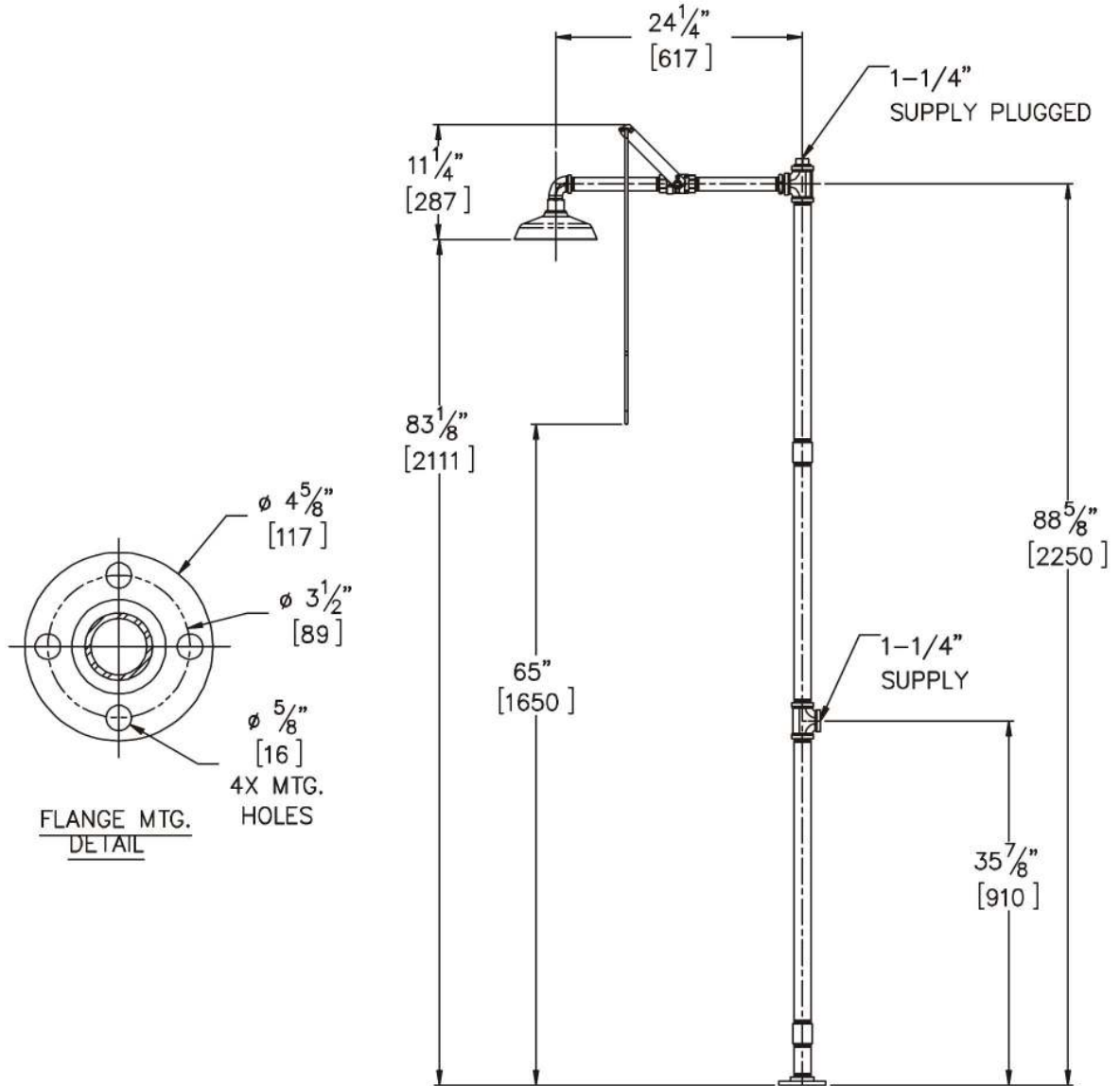
**Weekly Test Tag:** A water proof test card to record the date and inspector's name for weekly functional testing of the unit.

#### **Compliances:**

Test rating conditions are compliant to ANSI Z358.1-2004



□ **Model S2300-AS** : Pedestal Mounted Emergency Shower, All Stainless Steel



GENERAL NOTES:

1. ALL DIMENSIONS ARE IN INCHES [MM].